

# PORTABLE BLOWER

منفاخ

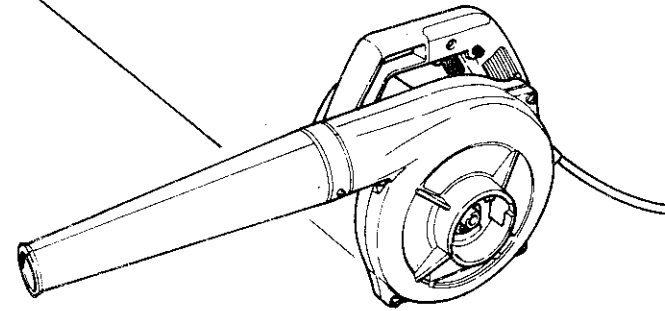
GEBLÄSE

VENTILATEUR/ASPIRATEUR

SOFFIATORE-ASPIRATORE

BLAASAPPARAAT

SOPLADOR



ادرس هذا الكتيب كاملا وافهم ارشادات قبل استعماله

Read through carefully and understand these instructions before use.  
Diese Anleitung vor Benutzung des Werkzeugs sorgfältig durchlesen und verstehen.  
Lire soigneusement et bien assimiler ces instructions avant usage.  
Prima dell'uso leggere attentamente e comprendere queste istruzioni.  
Deze gebruiksaanwijzing s.v.p. voor gebruik zorgvuldig doorlezen.  
Leer cuidadosamente y comprender estas instrucciones antes del uso.



ارشادات المعاملة

Handing instructions

Bedienungsanleitung

Mode d'emploi

Istruzioni per l'uso

Gebruiksaanwijzing

Instrucciones de manejo

## Specifications

|                       |  |
|-----------------------|--|
| Voltage (by areas)*   | (110V, 115V, 120V, 127V, 220V, 230V, 240V) ~ |
| Input                 | 335 W*                                       |
| Full-load Speed       | 13000/min                                    |
| Wind Pressure         | 400 mmAq                                     |
| Output Wind Velocity  | 2.3 m <sup>3</sup> /min                      |
| Weight (without cord) | 1.8 kg                                       |

\*Be sure to check the nameplate on product as it is subject to change by areas.

## General operational precautions

1. Keep work area clean. Cluttered areas and benches invite accidents.
2. Avoid dangerous environment. Don't expose power tools to rain. Don't use power tool in damp or wet locations. And keep work area well lit.
3. Keep children away. All visitors should be kept safe distance from work area.
4. Store idle tools. When not in use, tools should be stored in dry, high or locked-up place-out of reach of children.
5. Don't force tool. It will do the job better and safer at the rate for which it was designed.
6. Use right tool. Don't force small tool or attachment to do the job of a heavy duty tool.
7. Wear proper apparel. No loose clothing or jewelry to get caught in moving parts. Rubber gloves and footwear are recommended when working outdoors.
8. Use safety glasses with most tools. Also face or dust mask if cutting operation is dusty.
9. Don't abuse cord. Never carry tool by cord or yank it to disconnect from receptacle. Keep cord from heat, oil and sharp edges.
10. Secure work. Use clamps or a vise to hold work. It's safer than using your hand and it frees both hands to operate tool.
11. Don't overreach. Keep proper footing and balance at all times.
12. Maintain tools with care. Keep tools sharp at all times, and clean for best and safest performance. Follow instructions for lubricating and changing accessories.
13. Disconnect tools. When not in use, before servicing; when changing accessories such as blades, bits, cutters, etc.
14. Remove adjusting keys and wrenches. Form habit of checking to see that keys and adjusting wrenches are removed from tool before turning it on.
15. Avoid accidental starting. Don't carry plugged-in tool with finger on switch. Be sure switch is off when plugging in.
16. Outdoor use extension cords. When tool is used outdoors, use only extension cords suitable for use outdoors and so marked.

17. Do not use power tools for applications other than those specified in the Handling Instructions.
18. Never use power tools near inflammable or explosive materials.
19. To ensure the designed operational integrity of power tools. Do not remove installed covers or screws.
20. Do not touch movable parts or accessories unless the power source has been disconnected.
21. Use your tool at lower input than specified on the nameplate; otherwise, the finish may be spoiled and working efficiency reduced due to motor overload.
22. Consult an authorized Service Agent in the event of power tool failure.
23. Use only original replacement parts.
24. This tool should only be disassembled for replacement of carbon brushes.

## Standard accessory

- Dust Bag . . . . . 1
- Standard accessories are subject to change without notice.

## How to use the blower

1. By pulling the trigger and pushing the stopper, the switch will remain in the ON position even when the trigger is released, promoting efficient, continuous operation. By pulling the trigger again, the stopper is disengaged and the switch is turned OFF when the trigger is released.
2. An excessively large volume of dust in the dust bag will reduce the dust collecting efficiency of the blower. Frequently empty the dust bag to ensure maximum dust collecting efficiency.

## Applications

- Cleaning power distribution panels and other equipment located in power plants, substations, factories and other buildings.
- Cleaning facilities and equipment in lumbermills, cigarette-making plants, spinning mills, etc.
- Cleaning devices and equipment in repair shops.
- Blowing operation.

---

#### Prior to operation

1. Ensure that the power source to be utilized conforms to the power requirements specified on the product nameplate.
2. Ensure that the power switch is in the OFF position. If the plug is connected to a power receptacle while the power switch is in the ON position, the power tool will start operating immediately, inviting serious accident.
3. Extension cord. When the work area is removed from the power source, use an extension cord of sufficient thickness and rated capacity. The extension cord should be kept as short as practicable.
4. Mount the nozzle and dust bag.

---

#### Mounting and dismounting the nozzle and dust bag

1. Mounting the Nozzle:  
Insert the pin located inside the nozzle into the notch provided on the blast port, and fully turn the nozzle in the direction indicated by the arrow in Fig. 1.  
To dismount the nozzle, follow the above procedures in reverse.
2. When using the Blower for dust collection:
  - (1) Mounting the Dust Bag:  
Mount the dust bag on the blast port, following the same procedures described above for mounting of the nozzle. (Fig. 2)
  - (2) Mounting the Nozzle:  
Insert the pin located on the inside of the nozzle into the notch provided on the suction port, and fully turn the nozzle in the direction indicated by the arrow in Fig. 3.

---

#### Maintenance and inspection

1. Inspecting the mounting screws:  
Regularly inspect all mounting screws and ensure that they are properly tightened. Should any of the screws be loose, retighten them immediately. Failure to do so could result in serious hazard.
2. Inspecting the carbon brushes: (Fig. 4)  
The motor employs carbon brushes which are consumable parts. Since an excessively worn carbon brush could result in motor trouble, replace a carbon brush with a new one when it becomes worn to or near the 'wear limit'. In addition, always keep carbon brushes clean and ensure that they slide freely within the brush holders.
3. Replacing a carbon brush:  
Disassemble the brush cap with a minus-head screwdriver. The carbon brush can then be easily removed.
4. Maintenance of the motor:  
The motor unit winding is the very "heart" of the power tool. Exercise due care to ensure the winding does not become damaged and/or wet with oil or water.

---

#### PRECAUTIONS ON USING THE BLOWER

1. Beware of electric shock when cleaning welded parts. When cleaning the welds of a distribution panel, etc., do not allow the blower to get close to the welded part. Leave adequate room between the weld and blower. Be sure to use the blower with the nozzle attached.
2. Do not leave the blower on.  
It is dangerous to leave the blower on the floor, etc., while it is still on. Be sure to switch off the power first.
3. Do not obstruct the air outlet and intake.  
If the air outlet or intake is obstructed, the motor speed will rise abnormally and the internal blades may be damaged. The motor may also overheat and be damaged.  
Never obstruct air outlet and intake.
4. Prevent fire and explosion.  
Never use the blower where there is laquer, paint, benzene, thinner, gasoline, or other flammable or explosive substances. Also, if a lit cigarette butt is sucked into the blower, it may cause internal damage or fire. Therefore be careful not to let any lit cigarette butts sucked in.
5. Avoid sources of heat.  
Avoid placing the blower near sources of high heat such as heaters. Doing so may cause discoloration or deformation.
6. Have the blower regularly inspected when using it for sticky dust particles.  
If the blower is used to clean or blow sticky dust particles, have the blower regularly inspected by an authorized service agent.  
Adhesion of sticky particles that are sucked in may damage the motor break the blades.
7. Do not wipe plastic parts with solvent.  
Solvents such as gasoline, thinner, benzene, carbon tetrachloride, alcohol, ammonia and oil containing chloric annex may damage and crack plastic parts. Do not wipe them with such solvent. Wipe plastic parts with a soft cloth lightly dampened with soapy water.

---

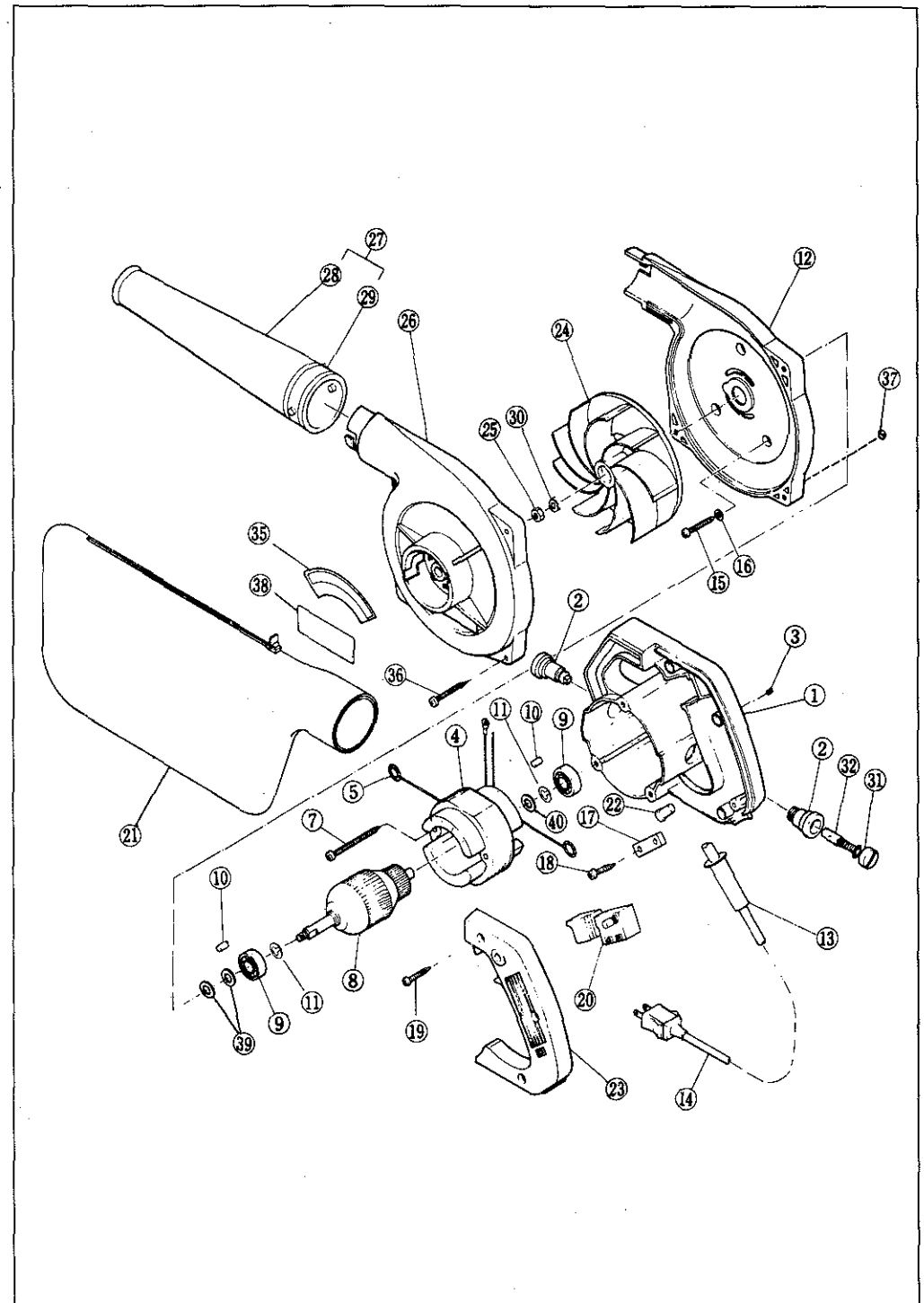
#### NOTE

Due to tool's continuing program of research and development, the specifications herein are subject to change without prior notice.

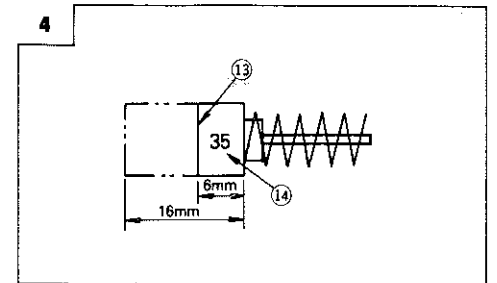
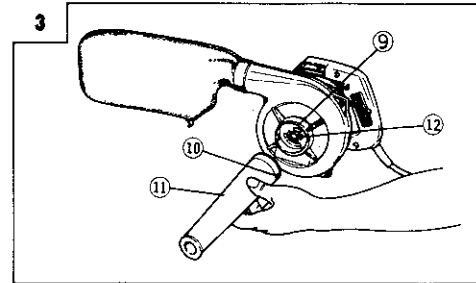
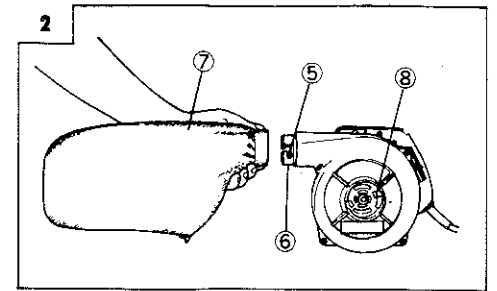
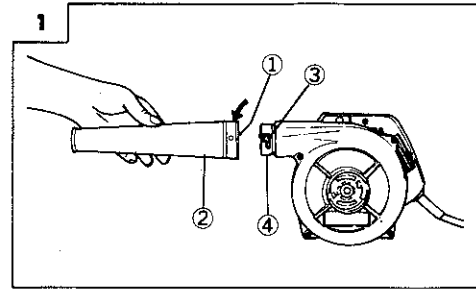
---

#### CAUTION:

Continuous running of machine should not exceed 30 minutes.



|    |                        |                                   |
|----|------------------------|-----------------------------------|
| 1  | Housing                |                                   |
| 2  | Brush Holder           |                                   |
| 3  | ⊕ Tapping Screw        | M3 x 10                           |
| 4  | Stator Ass'y           |                                   |
| 5  | Brush Terminal         |                                   |
| 7  | ⊕ Tapping Screw        | M5 x 40                           |
| 8  | Armature Ass'y         |                                   |
| 9  | Ball Bearing (608ZZC3) |                                   |
| 10 | Bearing Lock           |                                   |
| 11 | Washer (E)             |                                   |
| 12 | Casing                 |                                   |
| 13 | Cord Armor             |                                   |
| 14 | Cord Ass'y             |                                   |
| 15 | ⊕ Tapping Screw        | M5 x 32                           |
| 16 | Washer (S)             |                                   |
| 17 | Cord Clip              |                                   |
| 18 | ⊕ Tapping Screw        | M4 x 16                           |
| 19 | ⊕ Tapping Screw        | M4 x 18                           |
| 20 | Switch                 |                                   |
| 21 | Dust Bag Ass'y         |                                   |
| 22 | Connector              |                                   |
| 23 | Handle Cover           |                                   |
| 24 | Fan                    |                                   |
| 25 | Nut                    | M6                                |
| 26 | Casing Cover           |                                   |
| 27 | Nozzle Ass'y           |                                   |
| 28 | Nozzle                 |                                   |
| 29 | Holder                 |                                   |
| 30 | Washer                 |                                   |
| 31 | Brush Cap              |                                   |
| 32 | Carbon Brush           |                                   |
| 33 | Dust Bag               |                                   |
| 34 | Clip                   |                                   |
| 35 | Name Plate             |                                   |
| 36 | ⊕ Tapping Screw        | M4 x 22                           |
| 37 | Nut                    | M4                                |
| 38 | Name Plate             |                                   |
| 39 | Washer                 | 8 <sup>φ</sup> x 1 <sup>t</sup>   |
| 40 | Washer                 | 8 <sup>φ</sup> x 0.5 <sup>t</sup> |



|   | English                           |
|---|-----------------------------------|
| ① | The pin located inside the nozzle |
| ② | Nozzle                            |
| ③ | Notch                             |
| ④ | Blast port                        |
| ⑤ | Notch                             |
| ⑥ | Blast port                        |
| ⑦ | Dust bag                          |
| ⑧ | Suction port                      |
| ⑨ | Notch                             |
| ⑩ | Pin                               |
| ⑪ | Nozzle                            |
| ⑫ | Suction port                      |
| ⑬ | Wear limit                        |
| ⑭ | No. of Carbon brush               |

|   | Arabia               |
|---|----------------------|
| ① | دبوس يجيز في الفوهة  |
| ② | فوهة                 |
| ③ | ثلم                  |
| ④ | فتحة نفخة            |
| ⑤ | ثلم                  |
| ⑥ | فتحة نفخة            |
| ⑦ | كيس تعفير            |
| ⑧ | فتحة ممص             |
| ⑨ | ثلم                  |
| ⑩ | دبوس                 |
| ⑪ | فوهة                 |
| ⑫ | فتحة ممص             |
| ⑬ | حد بلى               |
| ⑭ | رقم من فرشاة الكربون |